

## Z1251 CONCEALED ARM SYSTEM – WALL SUPPORTED

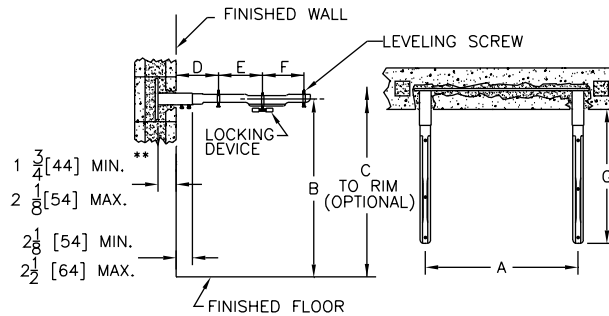


### ENGINEERING SPECIFICATION

Zurn Z1251 lavatory support system with concealed arms comes complete with Dura-Coated support plate with integral steel arm sleeves, concealed arms, and mounting fasteners.

Product Number	Approximate Weight lb [kg]
Z1251	18 [8]

PREFIXES	DESCRIPTION	LIST PRICE
<b>Z1251*</b>	Dura-Coated System with Concealed Arms	<b>460.00</b>
SUFFIXES		ADD
<b>-E2</b>	Concealed Arm Escutcheons 2" Long	<b>168.00</b>
<b>-79</b>	ADA Rough-In	<b>132.00</b>
BEST SELLERS		LIST PRICE
Z1251-F/Z5344		<b>460.00</b>
Z1251-(See Carrier Code Book)		<b>POA</b>



## Z1253 ADJUSTABLE CONCEALED ARM SYSTEM – WALL SUPPORTED

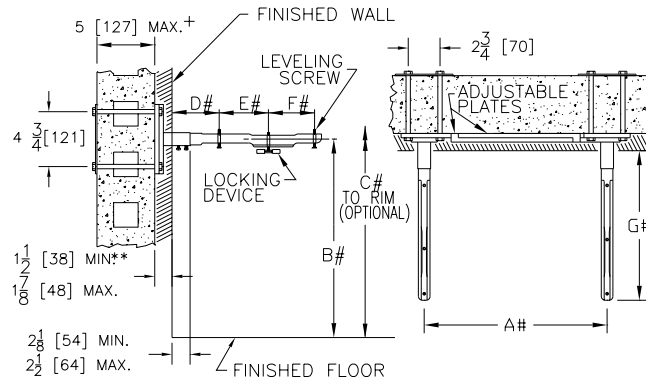


### ENGINEERING SPECIFICATION

Zurn Z1253 lavatory support system with concealed arms comes complete with adjustable Dura-Coated support plates with arm sleeves, concealed arms, and mounting fasteners.

Product Number	Approximate Weight lb [kg]
Z1253	18 [8]

PREFIXES	DESCRIPTION	LIST PRICE
<b>Z1253*</b>	Dura-Coated System with Concealed Arms	<b>588.00</b>
SUFFIXES		ADD
<b>-79</b>	ADA Rough-In	<b>132.00</b>
<b>SEE LEGACY ADDENDUM ON PAGE 369 FOR MORE INFORMATION</b>		



NOTE:  
 \*\* WITH STANDARD SLEEVE LENGTH OF 4 [102]  
 + WITH STANDARD STUD LENGTH OF 6 [152]  
 # REFER TO ROUGH-IN GUIDE OF SPECIFIC FIXTURE FOR DIMENSION

\*Regularly furnished unless otherwise specified.

For additional product information, please visit [www.zurn.com](http://www.zurn.com)

Items designated as Best Sellers are most specified and are generally in stock for shipment.

Ⓞ This symbol denotes a product that is engineered to reduce installation and rework time.

For Additional System Tools See "Z1200 Carrier Tools and Accessories" on page 214